



Leader in consulting engineering, integrity and technical excellence

www.engecorps.com.br



ENGE CORPS Engenharia S.A. is a consulting company whose mission is to develop projects in order to maximize the benefits generated by engineering works, mainly in the social and economic aspects. Founded in 1990, ENGE CORPS has accumulated knowledge and experience in projects of the most varied sizes, always standing out for its quality and for suggesting innovative solutions in the various segments in which it operates. This currently qualifies it as one of the leading companies in quality in the Brazilian market. In 2009 it was incorporated by the TYPESA Group, which is one of the most experienced European consultants in the development of infrastructure projects. Since its founding in 1966, the group has carried out an intense activity in planning, design, supervision and management of important works and investments in the areas of civil engineering, architecture, renewable energy and the environment, in Europe, America, Africa, the Middle East, Asia and Oceania. The ENGE CORPS Quality Management System is certified by the Carlos Alberto Vanzolini Foundation and adheres to the ABNT ISO 9001:2015 Standard. This system leads to excellence and competitiveness, bringing the concept of effectiveness and efficiency to all jobs, implementing planning, organization, monitoring and control actions in them. Also complying with the principles of Good Governance - transparency, equity, accountability and corporate responsibility - ENGE CORPS has a Compliance System, which is structured, applied and updated according to the characteristics and risks inherent to its activities.

In addition, ENGE CORPS is currently implementing the Environmental Management System in compliance with the ABNT ISO 14001:2015 Standard and Law 13.709/18 - General Law for the Protection of Personal Data (LGPD).

The TYPESA Group has AENOR certification, in accordance with the international standard UNE-EN ISO 9001; of Environmental Management according to the international standard UNE-EN-ISO 14001 and of "Occupational Health and Safety Management System" according to the ISO 45001:2018 standard and, more recently, ISO 37001 - Anti-Bribery Management System, ISO 19650 - Building Information Modeling, from ISO 27001 Information Security to UNE 166002 linked to the Innovation System.



Engineering and Consulting Services



ENGE CORPS has tools and software from the Autodesk AEC Collection, including AutoCAD, AutoCAD Plant 3D, Civil 3D, Revit, Navisworks, InfraWorks 360, Inventor, among others, in their most recent versions available, and it is worth mentioning that projects have been developed in BIM Platform in the company since 2014.

transports | main and airports | PROJECTS

- Final Design of the Duplication of the Tamoios Highway in the Mountain Section. *Construtora Queiroz Galvão*
- Functional, Basic and Final Design for the Road Contour of Campos do Goytacazes. *Autopista Fluminense - ARTERIS, RJ*
- Final Design and ATO of Lots 4 and 5 of the North Segment of Mario Covas Ring Road. *DERSA, SP*
- Supervision of the Slope Containment Works of the Serra do Espigão BR-101. *Autopista Planalto Sul - ARTERIS, SC*
- Supervision and Management of the East West Integration Railway Works. *VALEC- Engenharia, Construções e Ferrovias S.A., BA*
- Management of the Tietê Paraná Waterway Modernization Program - Waterway Department
- Final Design of the Permanent Way of Lot 3 of Line 5 - Lilac of the São Paulo Metro. *Construtora Andrade Gutierrez / Camargo Corrêa Consortium*
- Quality Control of the São Paulo Metro Line 6-Orange project. *ACCIONA*

- Management of Projects and Works for the expansion, maintenance and operation of the airport infrastructure of the airport complexes that make up the Northeast Block. *AENA Brasil*
- Final Design for the Expansion Works and Terminal 3 at Guarulhos Airport - *GRU Airport, SP*
- Final Design of the LATAM Maintenance Center, at Guarulhos Airport. *TAM Linhas Aéreas S.A.*
- Due Diligence, Conceptual Design, Master Plan, Preliminary Design and Basic Design for the Renovation and Expansion of the Deputado Luís Eduardo Magalhães International Airport - Salvador – BA. *Vinci Airports*
- Legal Preliminary Design, Basic Design and Final Design for the Expansion, Maintenance and Exploitation of the Tancredo Neves International Airport - Confins

transports

airports



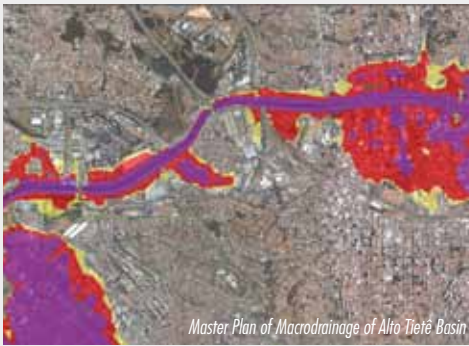
energy and hydraulic works | main PROJECTS



energy

hydraulic works

- Owner's Engineering of Ilha Solteira HPPs and Jupiá HPP. *China Three Gorges Corporation – CTG Brasil*
- Final Design and Technical Monitoring of Works (ATO) for the reinforcement of the Maravilhas Dam II. *VALE*
- Owner's Engineering for the Works of the Belo Monte HPP. *Norte Energia S.A., Altamira, PA*
- Final Designs of the Tramandaí Wind Farms. *EDP Renováveis Brasil S.A., RS*
- Supervision of the Implementation Works of the Tramandaí Wind Farm. *EDP Renováveis Brasil S.A., RS*
- Final Design of the Cumaru and Lagoinha wind farms. *Enel Green Power, RN*
- Review of Studies and Final Design of the Hatillo Hydroelectric Power Plant (Dominican Republic). *Empresa de Generación Hidroeléctrica Dominicana - EGEHID*
- Final Designs for the Implementation of the Integration Project of the São Francisco River with the Northern Northeast Hydrographic Basins – Lot A. *Ministry of National Integration*
- Basic and Final Designs of Multiple Uses Jequitai I and II. *Companhia de Desenvolvimento dos Vales do São Francisco e do Parnaíba - CODEVASF*
- Feasibility Studies for the Integration Project of the São Francisco River with watersheds in northeastern Brazil, totaling about 580 km of canals, 25 dams and 10 tunnels. *Fundação de Ciência, Aplicações e Tecnologia Espaciais - FUNCATE*
- Integrated Use of the Water Resources of the Sertão de Pernambuco Project. *Companhia de Desenvolvimento dos Vales do São Francisco e do Parnaíba - CODEVASF*
- Development of Complementary Hydraulic Modeling of the Tietê River, in a river section located in the Municipalities of São Paulo and Guarulhos. *Department of Water and Electric Power - DAEE*
- Multiple Use of the Natural Resources of the Xingó System, Brazil. *Companhia de Desenvolvimento dos Vales do São Francisco e Parnaíba - CODEVASF*



sanitation
water resources

sanitation and water resources | main PROJECTS

- Atlas Brasil - Meeting the current and future demands for water of a population of approximately 174.2 million inhabitants distributed in 5,570 Brazilian municipal seats. ANA
- North Coast Loss Reduction Program. Sabesp
- Sustainable and Inclusive Sanitation Program. Sabesp
- Preparation of design studies for sustainable rainwater drainage and paving works, in streets of the urban perimeter of the Vila Nova neighborhood, Joinville municipality. Municipal City Hall of Joinville
- Development of the Third Macro Drainage Master Plan for the Alto Tietê Basin. Department of Water and Electric Power – DAEE
- Basic and Final Designs of the ETE and the SES of Perus. SABESP
- Final Design of Bangu ETE - RJ. Foz Águas do Brasil - F.AB. Zona Oeste S/A
- Water Resources Master Plans (PDRHs) / Water Resources Action Plans (PARHs), and the elaboration of the proposed framework for water bodies – Doce River. National Water Agency - ANA
- Participatory Process and Consolidation of Contributions for the Formulation of the National Water Resources Plan. Ministry of Regional Development
- Conception of the Critical Events Prediction System in the Paraíba do Sul River Basin. National Water Agency - ANA
- Consulting for Completion of the National Water Security Plan. National Water Agency - ANA
- Refinement of the Water Balance and Establishment of Operating Rules for 204 Reservoirs. National Water Agency - ANA
- Integrated Water Resources Plans for the Rio Grande Basin and RH Paraguay. National Water Agency - ANA



Engecorps Engenharia S.A.

comercial@engecorps.com.br | www.engecorps.com.br